



Gearing up for middle school!

Parent Information Night

EARL WARREN CONTACTS

Justin Conn, Principal

Martha Hutchinson, Administrative Assistant

**Mary Levinson/Kaitlin Wood, Assistant
Principal**

Rebecca Topete, Administrative Assistant

Jessica Craven, Counselor

Anne Van Winkle, Registrar

Monica Ramirez, Attendance

School Hours and Schedule

Regular school hours begin at 8:20 am and end at 2:50 pm

Zero period starts at 7:20 am. If you would like an early start please make sure to check off this option on your course selection forms.

Class Schedule: Mondays are **single period days** and Tuesday through Friday are **block period days**

Late Start Schedule: (approximately 2x a month)



Traditional Schedule

K

Period	Single / Monday		Period	Block Days
1	8:20 - 9:10			
2	9:15 - 10:03		1/2	8:20 - 8:15
3	10:13 - 11:01		3/4	10:15 - 11:55
4	11:06 - 11:54		APT	12:00 - 12:30
APT	11:59 - 12:29		Lunch	12:30 - 1:05
Lunch	12:29 - 1:04		5/6	1:10 - 2:50
5	1:09 - 1:57			
6	2:02 - 2:50			

Monday: All 6 classes

Tuesday and Thursday : 1 -3 -5

Wednesday and Friday : 2 -4 - 6

Zero Period Schedule

K

Period	Single / Monday		Period	Block Days
0	7:20 - 8:15			
1	8:20 - 9:10		0	7:20 - 8:15
2	9:15 - 10:03		1/2	8:20 - 8:15
3	10:13 - 11:01		3/4	10:15 - 11:55
4	11:06 - 11:54		APT	12:00 - 12:30
APT	11:59 - 12:29		Lunch	12:30 - 1:05
Lunch	12:29 - 1:04		5 (T/TH)	1:10 - 2:50
5	1:09 - 1:57		6 (W/F)	No class/Unscheduled
6	No class/Unscheduled			

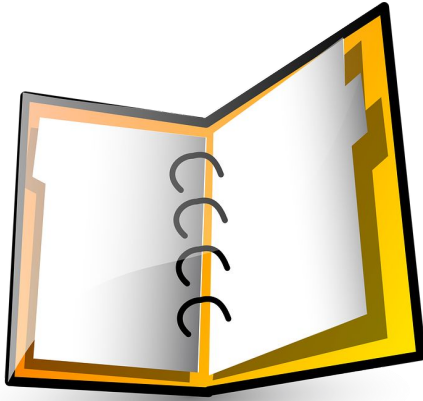
Monday: All 6 classes

Tuesday and Thursday : 1 -3 -5

Wednesday and Friday : 2 -4 - 6

What does a typical 7th grade schedule look like?

J



English

Math

Science

World History

Physical Education

Elective

Academic Practice Time (APT)

EWMS ENGLISH

DEPARTMENT

English Honors
English College Prep.

TWO LEVELS



College Prep classes:

provide a rigorous curriculum that meets the needs of the majority of students

Honors classes:

designed for students who excel in English language arts and require and desire a faster-paced, more in-depth, and challenging course of study

- both follow a rigorous curriculum that requires students to work toward mastery of the California Common Core State Standards
- both prepare students for high school English

COLLEGE PREP. STUDENT

- strong academically in English
- learns best with thorough instruction and practice of new concepts & skills
- appreciates challenges, but also benefits from assistance and practice with complex, critical-thinking and non-routine strategies
- may need more scaffolding of concepts (material broken down into smaller parts)

HONORS

- English is one of his/her gifts or passions; finds English stimulating
- masters concepts quickly without the need for much repetition
- values and is not discouraged by the challenges of complex, critical-thinking opportunities; can achieve this with minimal assistance and often takes ideas to a higher level; connects to world issues related to the assigned reading and writings (goes beyond surface meanings, makes connections and inferences)
- an independent learner; resourceful; focused

*consider where students currently are, not where they hope to be

GENERAL EXPECTATIONS FOR STUDENTS ENTERING 7TH GRADE HONORS CLASSES



CAASPP

students should **exceed standards** in ELA (English Language Arts)

Reading Inventory

students should score:

- min. 1100 - 7th
- min. 1200 - 8th

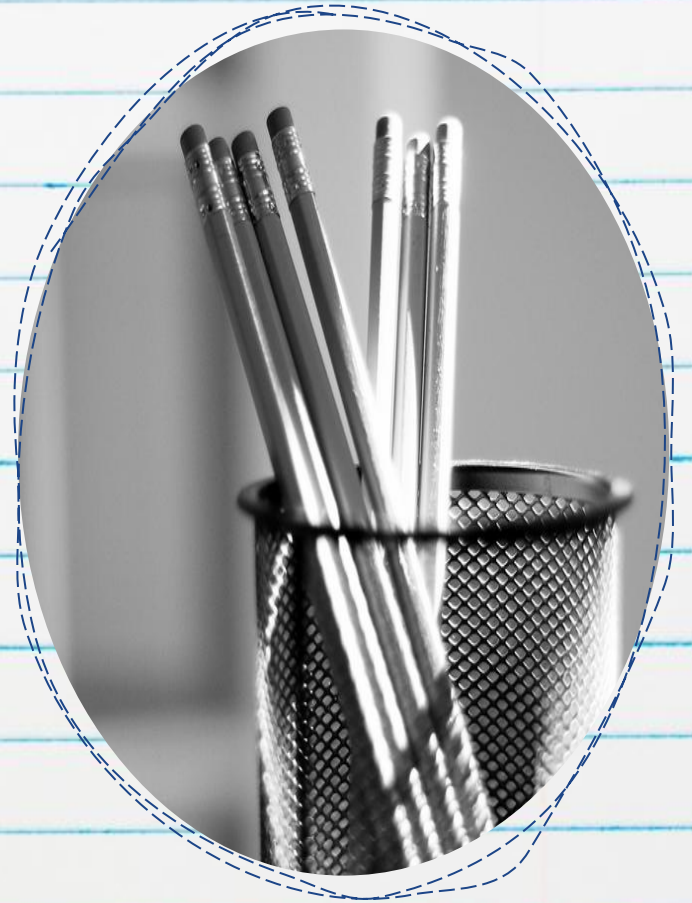
...plus a high interest in reading!

6th Grade Language Arts/Reading/Writing/Literature

students should have earned "secure or **exceeds expectations**" or a 4

STUDENTS ARE SUCCESSFUL IN HONORS IF THEY:

- *manage time well (able to juggle homework, family obligations, and extracurricular activities)*
- *are organized (students will typically work on multiple assignments over several days and keep track of different due dates)*
- *have an exceptional work ethic; are a self-starter, highly self-motivated, resourceful, and work well independently*



EW Math Course Option

Integrated Math A Essentials	Below grade level remedial course Individualized computer based programs Slower pace of instruction Math diagnostic tests scores will be evaluated for placement
Integrated Math A	Grade level course
Integrated Math A Honors	Grade level course (advanced level) Faster pace of instruction
Integrated Math B Honors	8th grade honors course Open to high performing 7th graders Students must pass the SDUHSD Integrated Math Readiness Test (IMBHRT) with a 70% or better (no exceptions)

Important Tests to be aware of

Math Diagnostic Test Project (MDTP): This test will help us determine if your students is ready for grade level math. Administered in 6th grade classes.

Integrated Math B Honors Test administered at middle schools (May 5 and 7 @ 3:30 room 701 for Earl Warren). This test is for highly advanced math students.

Student Profile For Math Selection

As you begin to think about math course selection for your child it is important to consider the effects of both the academic side and the social/emotional side. While we should all be striving to be appropriately challenged, please understand all math students (regardless of level) can be successful in high school, college, and life.

Many students fall between these two columns and can “fit” in one of them better than the other. Please consider the choice for honors based on considering some of these characteristics. Below is a guide where most students fit and there are always exceptions to this list.

Math A

- o SBAC score (5th and 6th grade): Standard Nearly Met or Standard Met
- o MDTP score (spring 6th grade): 45-89
- o Average to good math student
- o Takes time to master a new concept
- o Desire to do what is required
- o Displays an average to good work ethic
- o May need hints when faced with complex problems
- o May need assistance with finding mistakes in work
- o May have difficulty explaining reasoning behind the math
- o Confident with routine problems
- o Can be excited about math
- o Typical homework load
- o May need parental guidance to balance school work and extracurricular activities

Math A Honors

K

- o SBAC score (5th and 6th grade): Standard Exceeded
- o MDTP score (spring 6th grade): 90-100
- o Exceptional math student
- o Masters a new concept quickly
- o Desire to go beyond what is required
- o Displays a good to exceptional work ethic
- o Enjoys solving complex problems on their own
- o Often finds errors in work without assistance
- o Explaining the meaning behind the math comes easily (may even give multiple methods)
- o Confident with more open-ended problems
- o Is excited about math
- o Heavier homework load
- o Comfortably balances school work and extracurricular activities



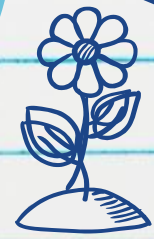
CONSIDER OVERALL STUDENT WELLNESS



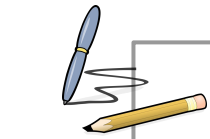
The transition to middle school is challenging for students. Generally speaking, we don't recommend that students take two honors classes in 7th grade. This is especially true for students with a busy extracurricular schedule.

Usually taking one honors class in English or math is enough to provide sufficient challenge for students seeking advanced study.

If students find, after 7th grade that they want a level change, SDUHSD has open access, so students can enter an Honors class at any grade.



EWMS Has So Many Electives!



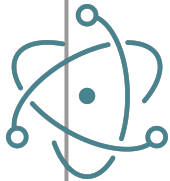
Vocal Performance

Gen Studio Art

Digital Art

Instrumental Music

Drama



Yearbook

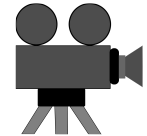
Spanish 1

Leadership

STEM

Advanced STEM

Video Film



Check out all of the course profiles
online at ew.sduhsd.net

Physical Education

PE is Co Ed

PE uniform is required

Lockers are assigned to each student

Students are graded on their “effort” in the required activities and not on their athletic ability

Curriculum: pickleball - street hockey - soccer - flag football - softball - team handball - large group recreational activities - volleyball - stretches - frisbee - interclass competitions - basketball - ping pong - California state mandated fitness testing


Surf PE

Learn about [ocean safety](#) through collaborative lessons with local lifeguards. Enjoy bodyboarding or surfing under the watchful eye of our Surf PE “supervisors.”

[Students](#) are not provided instruction how on how to surf or body board. However, beginners are welcome.

You must pass a [swim test](#) in the first 2 weeks of school

Due to popular demand, not all students who request Surf PE will get it. [Space is limited.](#)



Surf PE Requirements

1. Class meets off campus on block days
 - Students are scheduled either period 5 (Tues/Thurs) OR period 6 (Wed/Fri)
 - We can not accommodate for specific carpool situations
 - Leave EW to head to the beach at 1:20 pm. Parents pick up from beach at 2:50 pm
2. Mondays students participate in General PE activities on campus

After School Sports!

All sports are
organized by
the Boys & Girls
Club

Fall Sports

Flag Football
Girls Volleyball
Cross Country
Golf

Winter Sports

Girls Field Hockey
Wrestling
Boys Basketball

Spring Sports

Girls Basketball
Girls & Boys Soccer
Track & Field



Playing a sport is a great way to meet
new people, make new friends,
and stay healthy!

Academic Support Services

Academic Practice Time (APT): 30 minutes daily to get work done

Homework Hour: every day before school & during lunch

After school Academic Support: Teachers assist students with missing assignments. 1-2x month from 3:00 - 4:30 pm

The Cove: Learning commons for students to gather before school, during lunch, and after school.

**Take advantage of all of the resources
on our campus!**



Electronic Devices at EWMS



All students have access to Chromebooks whenever they are needed.



- **Students** do not need to bring personal devices on to campus.
- **Students** are accountable for the content and usage of their devices (including all documents, images, videos, etc).
- **Students** will not be using phones during academic times.



We expect **ALL** Seahawks to be a good digital citizens!

KEEPING YOU INFORMED

K

Electronic contact

- Email and phone communication 858-755-1558
- Website <http://ew.sduhsd.net>
- AERIES Parent portal
- Channel 54 weekly news
- EWMS Instagram: earlwarrenms

Personal contact

- Seahawk Readiness Day/New student orientation (August 13)
- Back To School Night
- PTSA meetings
- Coffee with the Principal
- School Site Council
- English Language Learner Advisory Committee (ELAC)

Supporting EWMS

K

PTSA

Conducts one fundraising campaign at the beginning of the year. These funds support year-long, school-wide academic and student support activities. Provides multiple opportunities to volunteer on campus and keeps you informed and up to date with what's happening on campus and with PTSA

Spirit Day
Staff Appreciation Week
Career Day
Geography Bee
Red Ribbon Week
Principal's Coffee
Readiness BBQ
8th grade promotion
And much more!!

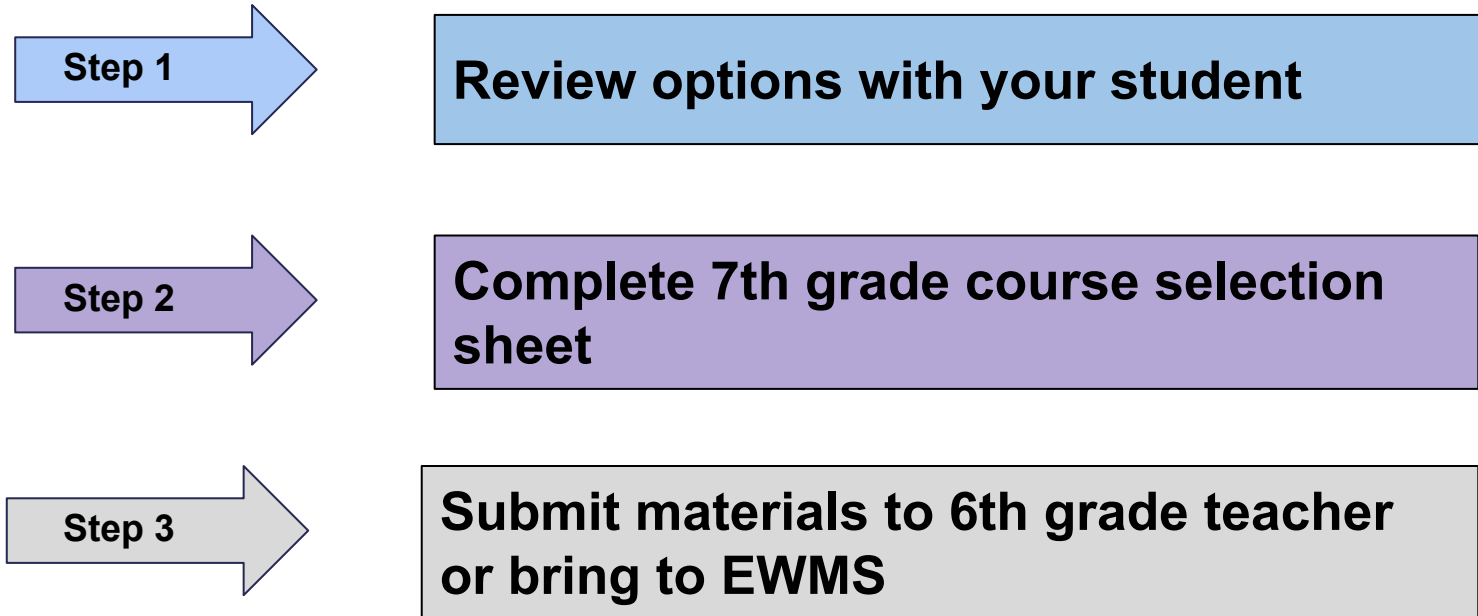
ASB

Students in ASB lead one fundraiser a year. They use funds to plan and budget all student activities on our campus. Proceeds go directly to students.

Bike Drive
Holiday Fundraiser
Great American Spell Check
School Dances
Seahawk Salute Lunches
Recycling Program
Valentine's Day Grams
Community Volunteer Work
And much more!!

If you are interested in volunteering for PTSA please email earlwarrenptsa@gmail.com

Completing registration materials



**FORMS DUE TO 6th GRADE TEACHER BY
MARCH 16th, or bring to EWMS**

Important Dates

J

March 16: Return course selection sheet to 6th grade teachers

April: Math testing in 6th grade classes

April 27: online registration for the IMBHRT posted

Mid-May: Math test results provided to parents and Math A Essentials placement letters mailed home

May 5 & 7: Integrated Math B Honors Readiness Test @ EWMS (reserve a date online)

August 13 : Seahawk Readiness Day

August 25: First Day of School!

Seahawk Readiness Day: August 13th

@EWMS

K

Parents, we have a special meeting just for you!

- Support your child's academic success
- Support your child's social/emotional development
- Learn about school safety
- Buy PE clothes, ASB and Yearbooks or join PTSA
- School business including back-to-school forms, Aeries Portal and Data Confirmation support

Incoming Students

- A variety of sessions to help students with their transition to Earl Warren
- 8th grade ASB students give a tour and answer questions
- Students learn ways to be successful at EWMS
- Family "BBQ"- ALL INVITED!

Welcome home, Seahawk Families!

Have a question?

justin.conn@sduhsd.net

kaitlin.wood@sduhsd.net

(as of next Monday)

jessica.craven@sduhsd.net